

St Paul's Catholic College, Manly



Year 11
Preliminary
Assessment
Handbook
2017

Table of Contents

1	Formal assessment program introduction	4
1.1	Course completion criteria	4
1.1.1	Non-completion of a course	4
1.1.2	Non-completion or failure to submit assessment tasks	4
1.2	What are the attendance requirements?	4
1.3	What happens if I am deemed to have not satisfactorily completed a course?	5
2	What do I need to know about assessment tasks?	7
2.1	What is assessment?	7
2.1.1	How am I notified about assessment tasks?	7
2.2	What do I do if I need to apply for an extension?	7
2.2.1	Applying for an extension	7
2.3	What happens if I am sick or some other unforeseen circumstance happens?	8
2.3.1	Illness or misadventure	8
2.3.2	Absence from school prior to an assessment task	8
2.4	What happens if I hand in an assessment task late or miss it completely?	8
2.4.1	Implications of late or missed assessment tasks	8
2.4.2	Establishing the exact due time	8
2.5	What happens when technology fails?	9
2.6	What happens in the case of malpractice in an assessment task?	9
2.6.1	Is the late submission of a task or a non-serious attempt considered malpractice?	9
2.7	What do I do if I require disability provisions?	9
2.8	What happens if I have transferred into St Paul's Catholic College after assessment has commenced?	10
2.9	What type of assessment feedback will I receive?	10
2.10	Assessment in VET and work placement	10
2.11	Procedure for the completion of assessment tasks	10
3	What do I do if I want to appeal a result?	12
3.1	Formal Assessment: Absence–Illness–Misadventure (AIM) Form	13
4	Course assessment outlines	14
	Ancient History	15
	Biology	16
	Business Studies	17
	Catholic Studies 1 unit	18
	Chemistry	19
	Construction (VET)	20
	Design and Technology	21
	Economics	22
	English Advanced	23
	English Extension 1	24
	English Standard	25
	English Studies	26
	Food Technology	27
	Geography	28
	Hospitality (VET)	29
	Industrial Technology (Multimedia / Timber)	30
	Information Processes and Technology	31
	Legal Studies	32
	Mathematics	33
	Mathematics Extension 1	34
	Mathematics General	35
	Modern History	36
	Music 1	37
	Music 2	38
	Personal Development, Health and Physical Education	39
	Physics	40
	Retail Services (VET)	41
	Senior Science	42
	Sport, Lifestyle and Recreation 1 unit	43
	Studies of Religion 1 unit	44

Studies of Religion 2 unit.....	45
Visual Arts	46
Work Studies 1 unit	47
Year 11 2017: Personal Assessment Calendar	48

1 Formal assessment program introduction

This handbook has been developed to provide students and parents with information regarding assessment for the NSW Education Standards Authority (NESA) Preliminary Course.

1.1 Course completion criteria

A student will be considered to have satisfactorily completed a course if, in the Principal's view, there is sufficient evidence that the student has:

- (a) studied the course developed or endorsed by the NESA; and
- (b) applied themselves with **diligence and sustained effort** to the set tasks and experiences provided in the course by the school (this is explained in more detail below); and
- (c) achieved some or all of the course outcomes.

1.1.1 Non-completion of a course

Students must provide sufficient evidence of course completion and achievement of course outcomes through the learning experiences provided by the teacher. This may be through assessment tasks, home study, ongoing classwork, ongoing bookwork, class discussions and preparation for lessons. Failure to provide such evidence may result in non-completion of a course. In such circumstances, students and their parents / caregivers will be notified through an official NESA warning letter.

1.1.2 Non-completion or failure to submit assessment tasks

If a student fails to complete an assessment task specified in the assessment program without a valid and accepted reason, a **zero** mark will be recorded for that task. In such circumstances, students will be notified through an official NESA warning letter.

1.2 What are the attendance requirements?

For the satisfactory completion of a course, a student's attendance at school is compulsory.

There are five main areas that need to be clarified with regard to absenteeism.

- (a) All absences must be supported with a letter, an email or phone call from the parent or caregiver.
- (b) Where absence coincides with either:
 - (i) the due date of an assessment task, or
 - (ii) the date an assessment task is to be held, a medical certificate is required to substantiate the absence.
- (c) Where a student's pattern of attendance interferes with his engagement with a substantial number of course outcomes, that student will be at risk of being awarded a **non-completion** for that course. (Refer to Section 1.3 for information on non-completion of a course). A warning letter will be issued outlining the new requirements and a due date for outstanding work / tasks to be completed to ensure outcomes are satisfactorily met.
- (d) **Approved Leave:** This may be granted by the Principal. An *Exemption from Attendance Form* must be completed prior to the absence. However, this does NOT exempt a student from completing assessment tasks. An AIM form must be submitted if an assessment task is scheduled or due during the approved leave. This must take place before the leave is taken.
- (e) The College does not encourage leave to be taken during a student's Preliminary year.

1.3 What happens if I am deemed to have not satisfactorily completed a course?

If at any time it appears that a student is at risk of being awarded a non-completion of a course determination, the Principal must give the student and parent or caregiver written warning as soon as possible. This is a NESAs requirement. The purpose of the warning letter is to formally acknowledge when a student has not satisfied the requirements of a course. The warning letter outlines the action required by the student to address the situation by a revised date. A sample copy of the warning letter is provided on the next page. If a student does not heed the warning letter and continues to not follow course requirements, then a second warning letter will be sent. The Principal will then award the student a non-completion award in that course if he does not follow the actions required to address the situation by the due date. This may jeopardise a student's eligibility for enrolment in Higher School Certificate courses.

Until a student presenting for a Higher School Certificate has satisfactorily completed courses totalling at least:

- (a) 12 units of Preliminary Courses; and
- (b) 10 units of HSC Courses

that satisfy the NESAs pattern of study requirements, the student will not be eligible to receive the award of a Higher School Certificate.

2 What do I need to know about assessment tasks?

2.1 What is assessment?

Assessment tasks may take many forms, for example: written examinations, research assignments, projects, presentations, practical or field work reports. Whatever the form, the primary function of an assessment task is to improve learning by providing feedback to students and their teachers about what has been learnt.

During the Preliminary Course the NESA stipulates that a formal assessment program is to be developed and implemented in all schools. The assessment tasks undertaken in each subject will help to determine what is to be recorded on a student's Record of Achievement. Measuring achievement at various points throughout the course provides a better indication of student achievement than a single examination.

2.1.1 How am I notified about assessment tasks?

The assessment schedule for all Preliminary courses can be found in this handbook. In addition to this a student will receive an assessment notification for each task. It is the student's responsibility to keep himself informed about the timing of assessment tasks. It is the teacher's duty to provide the students with **written confirmation** of the:

- (a) weighting (e.g. 15%),
- (b) outcomes formally assessed
- (c) task type
- (d) actual date and time (e.g. Period 3, Wednesday, 10 May 2017 – Week 3 Term 2)
- (e) place – *if appropriate* (e.g. Long Reef headland), and
- (f) specific requirements

for each assessment task. This information must be given a minimum of **two weeks** prior to the task due date. Any changes to the assessment schedule will be notified to students in writing.

2.2 What do I do if I need to apply for an extension?

Extensions (extra time to complete an assessment task) may be granted to a student in some cases of illness and/or misadventure. A student must apply in writing at least **ONE** week before the scheduled date of the task (see 'AIM Form' for details).

2.2.1 Applying for an extension

- (a) Obtain an "*Application for Illness and Misadventure Form*" (refer to copy in Section 3 of this handbook).
- (b) Complete the form and return it to the relevant KLA Leader at least one week prior to the scheduled due date.
- (c) The application will be considered by the Coordinator of Teaching and Learning and KLA Leader.
- (d) The student will be notified of the decision and if the extension is:
 - (i) **granted**, a new submission date will be given
 - (ii) **declined**, the student has the right to appeal this decision. This is done by writing to the Principal, who will discuss the application for extension with the student, Coordinator of Teaching and Learning and relevant KLA / teacher.

2.3 What happens if I am sick or some other unforeseen circumstance happens?

2.3.1 Illness or misadventure

If, due to illness, misadventure or compassionate grounds a student either:

- (a) misses an assessment task, or
- (b) is unable to complete an assessment task by the due date, or
- (c) is absent from school just prior to an assessment task being due or
- (d) his performance in a task is affected, or
- (e) is absent on the day an assessment task is due to be submitted.

The student must provide a **medical certificate** (where applicable) on the first day of his return to school. The medical certificate must be submitted with a completed “*Application for Illness/Misadventure Form*” (AIM Form - refer to Section 3 of this handbook). Where possible the College should also be notified via a phone call or email on the morning of the task.

The completed ‘AIM form’, with supporting documentation must be returned to relevant KLA Leader the next school day. This also applies for approved leave and school events (e.g. sport). Being on approved leave or a school event does not exclude a student from completing an assessment task.

The application will be considered by the KLA Leader and the Coordinator of Teaching and Learning. The student will be notified of the decision and if the application is:

- (iii) **granted**, the student will be notified of the outcome
- (iv) **declined**, the student has the right to appeal this decision. This is done by writing to the Principal, who will discuss the application with the student, Coordinator of Teaching and Learning and relevant KLA leader.

2.3.2 Absence from school prior to an assessment task

Students who are absent from school / classes prior to an assessment task may gain an unfair advantage. If a student is absent the day before a task is due his reasons must be valid and justified. The College may ask for a medical certificate or other supporting documentation. If the student has no valid reason for his absence a zero mark will be awarded, however, the task still must be completed.

If the absence is due to **illness or misadventure** – an AIM form must be completed; refer to Section 3 of this handbook.

2.4 What happens if I hand in an assessment task late or miss it completely?

2.4.1 Implications of late or missed assessment tasks

If an assessment task is missed or handed in late without a valid reason it will be **awarded a zero mark**. The assessment task must still be submitted so that the student can demonstrate he has completed the requirements of the course.

In the Preliminary course, students must make a genuine attempt at assessment tasks that contribute in excess of 50% of available marks. Completion of tasks worth exactly 50% is not sufficient; tasks worth in excess of 50% must be completed. Tasks that are submitted after the student has received a zero mark (i.e. task handed in late) WILL contribute to the excess of 50% required.

2.4.2 Establishing the exact due time

Teachers will indicate to students in writing when an assessment task is precisely due e.g. Period 3 Wednesday 10 May 2017. There are some instances though when an exact lesson cannot be specified. In such cases, where only a due date is given, students have until **3:30pm on the due date** to submit an assessment task to their teacher. If the teacher cannot be found students are to submit the assessment task to the **College Reception** where office staff will sign and stamp the time/date on the task and place it in the relevant teacher’s pigeon hole.

2.5 What happens when technology fails?

Failure to complete an assessment task on time due to technological problems e.g. computer failure, printer problems, lost files, computer viruses etc. will NOT be deemed acceptable reasons. Students are expected to keep back up files, rough copies etc. and make appropriate time allowances to avoid such problems.

No assessment task is to be submitted on Google Apps, Dropbox, USB drive or e-mailed to the College (unless specified by the teacher). Only hard copies will be accepted. If a task is required to be e-mailed, sending to an incorrect e-mail address will NOT be deemed acceptable reasons for a non-submission. It is the student's responsibility to ensure the correct e-mail address is used.

2.6 What happens in the case of malpractice in an assessment task?

Malpractice is any activity undertaken by a student that allows them to gain an unfair advantage over others. It includes, but is not limited to:

- (a) copying someone else's work in part or in whole, and presenting it as their own
- (b) using material directly from books, journals, CDs or the internet without reference to the source
- (c) building on the ideas of another person without reference to the source
- (d) buying, stealing or borrowing another person's work and presenting it as their own
- (e) submitting work to which another person such as a parent, coach or subject expert has contributed substantially
- (f) using words, ideas, designs or the workmanship of others in practical and performance tasks without appropriate acknowledgement
- (g) paying someone to write or prepare material
- (h) breaching school examination rules
- (i) using non-approved aides during an assessment task
- (j) contriving false explanations to explain work not handed in by the due date
- (k) assisting another student to engage in malpractice

A panel comprising the Coordinator of Teaching and Learning and relevant KLA Leader will review any cases of suspected malpractice. If malpractice is proven a zero mark will be awarded.

2.6.1 Is the late submission of a task or a non-serious attempt considered malpractice?

Late submission of assessment tasks may be malpractice where it is proven to be a deliberate mechanism to gain advantage over other students. Students may submit overdue assessment work for a variety of other reasons not considered malpractice.

Submitted work may be classified as a non-serious attempt where it is frivolous or offensive. Failure to reach a level of achievement does not necessarily constitute a non-serious attempt.

2.7 What do I do if I require disability provisions?

If a student requires disability provisions for an assessment task (e.g. reader, writer, extra examination time etc.) it is his responsibility to apply to the Learning Support Coordinator to establish his eligibility. The student must apply well in advance to allow sufficient time for the disability special provisions that are required to be put in place.

2.8 What happens if I have transferred into St Paul's Catholic College after assessment has commenced?

If a student transfers into the school after the commencement of the Preliminary Course assessment he:

- (a) will sit all the remaining assessment tasks as prescribed in the assessment outline.
- (b) may be required to complete alternative tasks for any assessments missed.
- (c) will have their final assessment mark and position in the group determined by their performance in all common assessment tasks and any alternative tasks they have been required to complete.

2.9 What type of assessment feedback will I receive?

Students will be given feedback on how well they have performed on each assessment task. This can take the form of marks, teacher comments, description of the competencies achieved by the student, description of what was not achieved or areas that may need improvement. The type of assessment task conducted will determine the nature of the feedback.

A student can only query the marks awarded and tallied by a teacher for an individual assessment task at the time the task is returned. Every student should reflect upon and analyse the feedback they receive in order to assist their understanding of the concepts examined in the task. Remember that the main purpose of assessment is to improve learning.

2.10 Assessment in VET and work placement

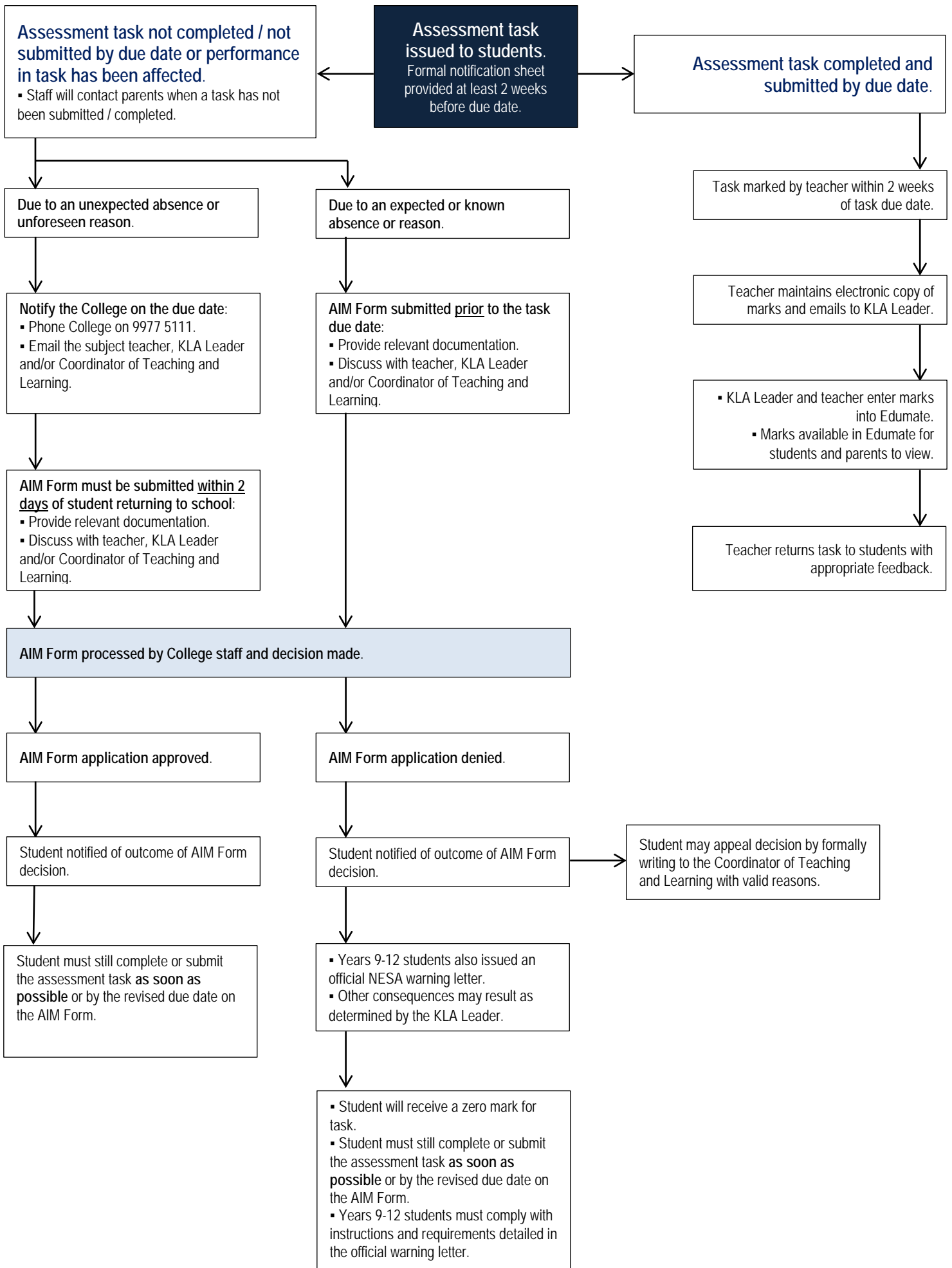
As with all other Preliminary courses, students undertaking VET courses may be deemed to have either completed or not completed course requirements.

It should be noted that if a student fails to undertake any mandatory work placement component it may be determined that the student has not made a genuine attempt to complete course requirements. In this case the Principal can indicate that the course has not been satisfactorily completed and the student may be issued with an 'N' determination.

It is a student's responsibility to see each of his teachers prior to commencing work placement regarding course work and upcoming assessment tasks which need to be complete before returning to school. If a student misses an assessment task whilst on work placement an AIM form must be submitted.

2.11 Procedure for the completion of assessment tasks

The flowchart on the next page provides an overview for the completion of assessment tasks. Specifically it provides information on what procedures and outcomes occur when assessment tasks are not completed or submitted on the due date as well as the procedures followed when tasks are submitted by their due date.



3 What do I do if I want to appeal a result?

A student is entitled to appeal to the Coordinator of Teaching and Learning if he is not satisfied with:

- (a) the marks awarded for a particular assessment task; or
- (b) the school's response to his appeal for disability provisions on the grounds of illness/misadventure; or
- (c) the school's decision to award an 'N' Determination for a course; or

If a student intends to appeal to the College for any of the reasons (a) – (d) above he needs to see the Coordinator of Teaching and Learning for the appropriate documents and procedures.

A student also has the right to appeal to the NESAs if he is not satisfied with the school's decision to award an 'N' Determination for a course.

3.1 Formal Assessment: Absence–Illness–Misadventure (AIM) Form

This form is to be used when a student is absent for a formal assessment task or unable to submit a task by its due date or time due to illness, misadventure, approved Principal leave or approved involvement in a College event. Where absences are foreseen, the form must be submitted prior to the due date of the task. For unforeseen absences it is to be submitted within two days of the student returning to the College, accompanied by supporting documentation (where applicable).

Student name:			
Year group:			
Subject:			
Teacher:			
Task requiring consideration:	▪ Task number: ▪ Task description:		
Date task is / was due: / /	Date task was issued: / /
Date(s) absent from school: / / to / /		
Reason for this absence:	<input type="checkbox"/> Illness <input type="checkbox"/> Misadventure <input type="checkbox"/> Principal leave <input type="checkbox"/> College event <input type="checkbox"/> Other		
Specific details / evidence for this absence: (attach any supporting documents to this form, e.g. medical certificate)			
.....			
.....			
.....			
Has the task been completed / submitted?	<input type="checkbox"/> Yes <input type="checkbox"/> No		

.....
Student signature

.....
Parent / Caregiver signature

Please return this form to staff in DM8 and ensure all sections above have been completed before submitting.

College use only

Coordinator of Teaching and Learning decision

The student's reason for being absent from sitting / submitting this assessment task has been deemed:

- Justified
 Unjustified

As a result, the action to be taken is as follows:

.....

.....

.....

.....
Coordinator of Teaching and Learning signature

..... / /
Date

Received stamp

Date received: / /

Copies of completed form to:

- Student (collects from DM8)
 KLA Leader
 AIMS database
 Subject teacher
 Coordinator of T & L (original)

4 Course assessment outlines

The following section contains assessment outlines for all Year 11 Preliminary courses at St Paul's in 2017. Each assessment outline indicates the:

- (a) course category
- (b) syllabus outcomes
- (c) assessment components and component weightings
- (d) focus outcomes assessed in each task
- (e) assessment components for each task
- (f) nature of each task (i.e. what students will be engaged in)
- (g) weighting for each task
- (h) timing of each task

Ancient History

Course: Preliminary Course
Course Category: A
Assessment Period: 2017

ASSESSMENT TASKS

■ Times are approximate. Exact dates will be confirmed with a minimum of two weeks' notice.

Due Date	Focus Outcomes	Task type and overview of content and skills addressed in task	Component				Weight	Your Mark	Your Rank
			A	B	C	D			
Wk. 10 Term 1	P3.1, P3.2, P3.3, P3.6, P4.2	Research assignment Tutankhamun's tomb.	5		10	5	20		/
Wk. 4/5 Term 2	P1.1, P3.1, P3.2, P3.4, P4.1	Half Yearly Examination Refer to the task assessment notification for specific content addressed in this examination.	5	10		5	20		/
Wk. 10 Term 2	P2.1, P3.1, P3.2, P3.3, P3.6	Historical investigation Ancient personality.	10	5	10	5	30		/
Wk. 9/10 Term 3	P1.1, P2.1, P3.1, P3.2, P3.3, P3.4, P3.5, P3.6, P4.1, P4.2	End of Preliminary Examination Covering all content studied throughout the course.	20	5		5	30		/
TOTAL			40	20	20	20	100		

COMPONENTS

WEIGHTINGS

A	Knowledge and understanding of course content	40
B	Source based skills: analysis, synthesis and evaluation of historical information	20
C	Historical inquiry and research, including mandatory historical investigation	20
D	Communication of historical understanding in appropriate forms	20

OUTCOMES

Code	Descriptor. A student ...
P1.1	describe and explain the contribution of key people, groups, events, institutions, societies and sites within the historical context
P2.1	identify historical factors and explain their significance in contributing to change and continuity in the ancient world
P3.1	locate, select and organise relevant information from a variety of sources
P3.2	identify relevant problems of sources in reconstructing the past
P3.3	comprehend sources and analyse them for their usefulness and reliability
P3.4	identify and account for differing perspectives and interpretations of the past
P3.5	discuss issues relating to ownership and custodianship of the past
P3.6	plan and present the findings of historical investigations, analysing and synthesising information from a range of sources
P4.1	use historical terms and concepts appropriately
P4.2	communicate knowledge and understanding of historical features and issues using appropriate oral and written forms

Biology

Course: Preliminary Course
Course Category: A
Assessment Period: 2017

ASSESSMENT TASKS

■ Times are approximate. Exact dates will be confirmed with a minimum of two weeks' notice.

Due Date	Focus Outcomes	Task type and overview of content and skills addressed in task	Component			Weight	Your Mark	Your Rank
			A	B	C			
Wk. 8 Term 1	P11, P12, P13, P14, P15	Field study A local ecosystem. Long Reef coastal platform study.	5	5	5	15		/
Wk. 4/5 Term 2	P1, P2, P4, P6, P7, P8, P12, P13	Half Yearly Examination Refer to the task assessment notification for specific content addressed in this examination.	10	5	5	20		/
Wk. 6 Term 3	P1, P2, P3, P4, P5, P6, P7, P8, P9, P10, P11, P12, P13, P14, P15	Resource portfolio Drawn from a Local Ecosystem, Patterns in nature, Life on Earth and Evolution of Australian Biota.	10	15	10	35		/
Wk. 9/10 Term 3	All outcomes possible	End of Preliminary Examination Covering all content studied throughout the course.	15	5	10	30		/
TOTAL			40	30	30	100		

COMPONENTS

WEIGHTINGS

A	Knowledge and understanding of the history, nature, and practice of biology, applications and uses of biology and their implications for society and the environment, and current issues, research and developments in biology; cell ultrastructure and processes, biological diversity, environmental interactions, mechanisms of inheritance and biological evolution.	40
B	Skills in planning and conducting first-hand investigations; gathering and processing first-hand data; gathering and processing relevant information from secondary sources.	30
C	Skills in communicating information and understanding; developing scientific thinking and problem-solving techniques; working individually and in teams.	30

OUTCOMES

Code	Descriptor. A student ...
P1	outlines the historical development of major biological principles, concepts and ideas
P2	applies the processes that are used to test and validate models, theories and laws of science, with particular emphasis on first-hand investigations in biology
P3	assesses the impact of particular technological advances on understanding in biology
P4	describes applications of biology which affect society or the environment
P5	describes the scientific principles employed in particular areas of biological research
P6	explains how cell ultrastructure and the coordinated activities of cells, tissues and organs contribute to macroscopic processes in organisms
P7	describes the range of organisms in terms of specialisation for a habitat
P8	analyses the interrelationships of organisms within the ecosystem
P9	explains how processes of reproduction ensure continuity of species
P10	identifies and describes the evidence for evolution
P11	identifies and implements improvements to investigation plans
P12	discusses the validity and reliability of data gathered from first-hand investigations and secondary sources
P13	identifies appropriate terminology and reporting styles to communicate information and understanding in biology
P14	draws valid conclusions from gathered data and information
P15	implements strategies to work effectively as an individual or as a team member

Business Studies

Course: Preliminary Course
Course Category: A
Assessment Period: 2017

ASSESSMENT TASKS

■ Times are approximate. Exact dates will be confirmed with a minimum of two weeks' notice.

Due Date	Focus Outcomes	Task type and overview of content and skills addressed in task	Component				Weight	Your Mark	Your Rank
			A	B	C	D			
Wk. 7 Term 1	P2, P7, P9	Media file and business report The business environment.	5		10	5	20		/
Wk. 4/5 Term 2	P1, P2, P4, P5, P6, P8	Half Yearly Examination Refer to the task assessment notification for specific content addressed in this examination.	10	5		5	20		/
Wk. 6 Term 3	P1 P4, P8, P9	Business plan For a small to medium enterprise (SME); business planning.	5	10	10	5	30		/
Wk. 9/10 Term 3	P1, P2, P3, P4, P5, P6, P10	End of Preliminary Examination Covering all content studied throughout the course.	20	5		5	30		/
TOTAL			40	20	20	20	100		

COMPONENTS

WEIGHTINGS

A	Knowledge and understanding of course content	40
B	Stimulus-based skills	20
C	Inquiry and research	20
D	Communication of business information, ideas and issues in appropriate forms	20

OUTCOMES

Code	Descriptor. A student ...
P1	discusses the nature of business, its role in society and types of business structure
P2	explains the internal and external influences on businesses
P3	describes the factors contributing to the success or failure of small to medium enterprises
P4	assesses the processes and interdependence of key business functions
P5	examines the application of management theories and strategies
P6	analyses the responsibilities of business to internal and external stakeholders
P7	plans and conducts investigations into contemporary business issues
P8	evaluates information for actual and hypothetical business situations
P9	communicates business information and issues in appropriate formats
P10	applies mathematical concepts appropriately in business situations

Catholic Studies 1 unit

Course: Preliminary Course
Course Category: NESA Endorsed Course (will NOT contribute to an ATAR)
Assessment Period: 2017

ASSESSMENT TASKS

■ Times are approximate. Exact dates will be confirmed with a minimum of two weeks' notice.

Due Date	Focus Outcomes	Task type and overview of content and skills addressed in task	Component		Weight	Your Mark	Your Rank
			A	B			
Wk. 10 Term 1	6.1a, 6.1b, 6.2a, 6.2b	<u>Ongoing assessment</u> Presentation on Catholic Worldview in contemporary Australia and its relevance today.	7.5	7.5	15		/
Wk. 4/5 Term 2	6.3b, 6.4a, 6.5b	<u>Oral presentation and written report</u> Catholic ethical teaching.	7.5	7.5	15		/
Wk. 9/10 Term 3	All outcomes possible	<u>End of Preliminary Examination</u> Covering all content studied throughout the course.	15	5	20		/
TOTAL			30	20	50		

COMPONENTS

WEIGHTINGS

A	Knowledge and understanding	30
B	Skills	20

OUTCOMES

Code	Descriptor. A student ...
6.1a	identifies and explains how God is revealed through history and culture
6.1b	explains the impact belief in eternal life has on the way Catholics perceive and interact with the world
6.2a	identifies the doctrine of Jesus Christ, the Word of God incarnate, as central to Catholicism
6.2b	explains how the life, death and resurrection of Jesus gives new meaning to human life, suffering and death
6.3a	researches and explains how the Church works through a range of ministries
6.3b	interprets the role of the Church in guiding its members' responses to moral and social issues
6.4a	demonstrates the relationship between the sacramental life and the Church's missionary activity
6.4b	defines the nature of both spirituality and religion and suggests how the Catholic heritage contributes to personal spirituality and identity
6.5a	demonstrates an awareness of the impact contemporary Biblical scholarship has on Catholic discipleship
6.5b	investigates the manner in which the Scriptures are able to nurture prayer, reflection, ritual and action

Chemistry

Course: Preliminary Course
Course Category: A
Assessment Period: 2017

ASSESSMENT TASKS

■ Times are approximate. Exact dates will be confirmed with a minimum of two weeks' notice.

Due Date	Focus Outcomes	Task type and overview of content and skills addressed in task	Component			Weight	Your Mark	Your Rank
			A	B	C			
Wk. 8 Term 1	P4, P5, P6, P11, P12, P13, P14, P15	<u>Resource Portfolio</u> The Chemical Earth.	5	10	10	25		/
Wk. 4/5 Term 2	P1, P2, P3, P6, P7, P10, P12, P13, P14, P15	<u>Half Yearly Examination</u> Refer to the task assessment notification for specific content addressed in this examination.	15	5	5	25		/
Wk. 6 Term 3	P3, P5, P7, P8, P9, P11, P12, P13, P14, P15	<u>First-hand investigation</u> Chemical reactions.	5	10	10	25		/
Wk. 9/10 Term 3	All outcomes possible.	<u>End of Preliminary Examination</u> Covering all content studied throughout the course.	15	5	5	25		/
TOTAL			40	30	30	100		

COMPONENTS

WEIGHTINGS

A	Knowledge and understanding of the history, nature, and practice of chemistry, applications and uses of chemistry and their implications for society and the environment, and current issues, research and developments in chemistry; atomic structure, periodic table and bonding, energy, chemical reactions, carbon chemistry and stoichiometry.	40
B	Skills in planning and conducting first-hand investigations; gathering and processing first-hand data; gathering and processing relevant information from secondary sources.	30
C	Skills in communicating information and understanding; developing scientific thinking and problem-solving techniques; working individually and in teams.	30

OUTCOMES

Code	Descriptor. A student ...
P1	outlines the historical development of major principles, concepts and ideas in chemistry
P2	applies the processes that are used to test and validate models, theories and laws of science with particular emphasis on first-hand investigations in chemistry
P3	assesses the impact of particular technological advances on understanding in chemistry
P4	describes applications of chemistry which affect society or the environment
P5	describes the scientific principles employed in particular areas of research in chemistry
P6	explains trends and relationships between elements in terms of atomic structure and bonding
P7	describes chemical changes in terms of energy inputs and outputs
P8	describes factors that influence the type and rate of chemical reactions
P9	relates the uses of carbon to the unique nature of carbon chemistry
P10	applies simple stoichiometric relationships
P11	identifies and implements improvements to investigation plans
P12	discusses the validity and reliability of data gathered from first-hand investigations and secondary sources
P13	identifies appropriate terminology and reporting styles to communicate information and understanding
P14	draws valid conclusions from gathered data and information
P15	implements strategies to work effectively as an individual or as a member of a team

Construction (VET)

Course: Preliminary Course
Course Category: B
Assessment Period: 2017

ASSESSMENT TASKS

- Times are approximate. Exact dates will be confirmed with a minimum of two weeks' notice.

Due Date	Competencies	Task Description
Ongoing throughout the course	As applicable to tasks	Students will be provided with numerous written, practical and/or oral competency tasks applicable to course content. Students may have a number of opportunities to gain competency by repeating tasks throughout the year.
Wk. 9/10 Term 3	All relevant competencies	End of Preliminary Examination Refer to the task assessment notification for specific content addressed in this examination. Covering all units of competency marked with an asterisk (*) in unit list below.

- In addition to the major tasks listed in the table above, students will undergo regular competency assessment in numerous ongoing practical and theoretical tasks.

UNITS OF COMPETENCY

	Unit Code	Unit of Competency
1	CPCCCM1012A *	work effectively and sustainably in the construction industry
2	CPCCCM1013A *	plan and organise work
3	CPCCCM1014A *	conduct workplace communication
4	CPCCCM1015A *	carry out measurements and calculations
5	CPCCCM2001A *	read and interpret plans and specifications
6	CPCCCM2005B *	use construction tools and equipment
7	CPCCOHS1001A *	work safely in the construction industry
8	CPCCOHS2001A *	apply OHS requirements, policies and procedures in the construction industry
9	CPCCCM2006B	apply basic levelling procedures
10	CPCCCA2003A	erect and dismantle formwork for footings and slabs on ground
11	CPCCCA2011A	handle carpentry materials
12	CPCCCM2004A	handle construction materials
13	CPCCCA2002B	use carpentry tools and equipment
14	CPCCWF2001A	handle wall and floor tiling materials
15	CPCCWF2002A	use wall and floor tiling tools and equipment

- All students must complete 35 hours compulsory work placement (70 hours over two years).
- On successful completion of all competencies and 70 hours of work placement, students will gain an AQF Certificate II in Construction Pathways (CPC20211).

Design and Technology

Course: Preliminary Course
Course Category: A
Assessment Period: 2017

ASSESSMENT TASKS

■ Times are approximate. Exact dates will be confirmed with a minimum of two weeks' notice.

Due Date	Focus Outcomes	Task type and overview of content and skills addressed in task	Component			Weight	Your Mark	Your Rank
			A	B	C			
Wk. 10 Term 1	P1.1, P2.1, P4.1, P3.1, P4.2, P5.3, P5.2, P6.1	<u>Minor design project 1</u> Leisure chair.	15	5	5	25		/
Wk. 9 Term 2	P1.1, P2.2, P3.1, P5.3, P4.1, P4.2, P5.2, P6.2	<u>Minor design project 2</u> Sustainable project.	15	10		25		/
Wk. 6 Term 3	P1.1, P3.1, P4.1, P4.2, P4.3, P5.1, P5.2, P5.3	<u>Minor design project 3 and oral presentation</u> Product design.	20	10		30		/
Wk. 9/10 Term 3	All outcomes possible	<u>End of Preliminary Examination</u> Covering all content studied throughout the course.			20	20		/
TOTAL			50	25	25	100		

COMPONENTS

WEIGHTINGS

A	Designing projects	50
B	Presentation of research	25
C	Test type tasks	25

OUTCOMES

Code	Descriptor. A student ...
P1.1	examines design theory and practice, and considers the factors affecting designing and producing in design projects
P2.1	identifies design and production processes in domestic, community, industrial and commercial settings
P2.2	explains the impact of a range of design and technology activities on the individual, society and the environment through the development of projects
P3.1	investigates and experiments with techniques in creative and collaborative approaches in designing and producing
P4.1	uses design processes in the development and production of design solutions to meet identified needs and opportunities
P4.2	uses resources effectively and safely in the development and production of design solutions
P4.3	evaluates the processes and outcomes of designing and producing
P5.1	uses a variety of management techniques and tools to develop design projects
P5.2	communicates ideas and solutions using a range of techniques
P5.3	uses a variety of research methods to inform the development and modification of design ideas
P6.1	investigates a range of manufacturing and production processes and relates these to aspects of design projects
P6.2	evaluates and uses computer-based technologies in designing and producing

Economics

Course: Preliminary Course
 Course Category: A
 Assessment Period: 2017

ASSESSMENT TASKS

■ Times are approximate. Exact dates will be confirmed with a minimum of two weeks' notice.

Due Date	Focus Outcomes	Task type and overview of content and skills addressed in task	Component				Weight	Your Mark	Your Rank
			A	B	C	D			
Wk. 9 Term 1	P1, P2, P3, P4, P5, P6, P8, P10	Stimulus based in class task Meaning, operation and working of an economic system.		10		10	20		/
Wk. 4/5 Term 2	P1, P2, P3, P4, P5, P7, P8, P10, P11, P12	Half Yearly Examination Refer to the task assessment notification for specific content addressed in this examination.	15	5			20		/
Wk. 4 Term 3	P1, P2, P4, P5, P6, P8, P9, P10, P12	Media file Current economic issues and government policies.			20	10	30		/
Wk. 9/10 Term 3	P1, P2, P3, P5, P6, P7, P8, P9, P10, P11	End of Preliminary Examination Covering all content studied throughout the course.	25	5			30		/
TOTAL			40	20	20	20	100		

COMPONENTS

WEIGHTINGS

A	Knowledge and understanding of course content	40
B	Stimulus-based skills	20
C	Inquiry and research	20
D	Communication of economic information, ideas and issues in appropriate forms	20

OUTCOMES

Code	Descriptor. A student ...
P1	demonstrates understanding of economic terms, concepts and relationships
P2	explains the economic role of individuals, firms and government in an economy
P3	describes, explains and evaluates the role and operation of markets
P4	compares and contrasts aspects of different economies
P5	analyses the relationship between individuals, firms, institutions and government in the Australian economy
P6	explains the role of government in the Australian economy
P7	identifies the nature and causes of economic problems and issues for individuals, firms and governments
P8	applies appropriate terminology, concepts and theories in economic contexts
P9	selects and organises information from a variety of sources for relevance and reliability
P10	communicates economic information, ideas and issues in appropriate forms
P11	applies mathematical concepts in economic contexts
P12	works independently and in groups to achieve appropriate goals in set timelines

English Advanced

Course: Preliminary Course
Course Category: A
Assessment Period: 2017

ASSESSMENT TASKS

■ Times are approximate. Exact dates will be confirmed with a minimum of two weeks' notice.

Due Date	Focus Outcomes	Task type and overview of content and skills addressed in task	Component					Weight	Your Mark	Your Rank
			A	B	C	D	E			
Wk. 10 Term 1	1, 2, 3, 4	<u>Extended response and listening task</u> Belonging.	15					15		/
Wk. 4/5 Term 2	1, 2, 3, 4, 6	<u>Half Yearly Examination</u> Belonging.			15			15		/
Wk. 8 Term 2	5, 7, 8, 9	<u>Viewing and representing task</u> Dr Strangelove.				5	15	20		/
Wk. 6 Term 3	1, 2, 3, 4, 12A	<u>Speaking task</u> Contrasting Views: The Old Man and the Sea / Poetry.		15		5		20		/
Wk. 9/10 Term 3	1, 3, 10, 11, 12, 12A, 13	<u>End of Preliminary Examination</u> Creative Writing – Belonging. Extended response – Dr Strangelove. Extended response – Old Man and the Sea / Poetry.			10	20		30		/
TOTAL			15	15	25	30	15	100		

COMPONENTS

WEIGHTINGS

A	Listening	15
B	Speaking	15
C	Reading	25
D	Writing	30
E	Viewing and representing	15

OUTCOMES

Code	Descriptor. A student ...
1	describes and explains the relationships between composer, responder, text and context in particular texts
2	describes and explains relationships among texts
3	develops language relevant to the study of English
4	describes and explains the ways in which language forms and features, and structures of particular texts shape meaning and influence responses
5	demonstrates an understanding of the ways various textual forms, technologies and their media of production affect meaning
6	engages with a wide range of texts to develop a considered and informed personal response
7	selects appropriate language forms and features, and structures to explore and express ideas and values
8	articulates and represents own ideas in critical, interpretive and imaginative texts
9	assesses the appropriateness of a range of processes and technologies in the investigation and organisation of information and ideas
10	analyses and synthesises information and ideas from a range of texts for a variety of purposes, audiences and contexts
11	draws upon the imagination to transform experience into text
12	reflects on own processes of responding and composing
12A	demonstrates a capacity to understand and use different ways of responding to and composing particular texts
13	reflects on own processes of learning

English Extension 1

Course: Preliminary Course
Course Category: A
Assessment Period: 2017

ASSESSMENT TASKS

■ Times are approximate. Exact dates will be confirmed with a minimum of two weeks' notice.

Due Date	Focus Outcomes	Task type and overview of content and skills addressed in task	Component		Weight	Your Mark	Your Rank
			A	B			
Wk. 8 Term 2	1, 2	<u>Oral presentation</u> The Iliad.		15	15		/
Wk.6 Term 3	1, 3	<u>Writing portfolio</u> Appropriation.	15		15		/
Wk. 9/10 Term 3	1, 2, 3	<u>End of Preliminary Examination</u> Part 1: Creative response (10%). Part 2: Critical response (10%).	10	10	20		/
TOTAL			25	25	50		

COMPONENTS

WEIGHTINGS

A	Knowledge and understanding of complex texts and of how and why they are valued	25
B	Skills in complex analysis; sustained composition and independent investigation	25

OUTCOMES

Code	Descriptor. A student ...
1	understands how and why texts are valued in and appropriated into a range of contexts
2	develops skills in independent investigation, involving particular texts and their manifestations in various forms, and within particular cultural contexts
3	develops skills in extended composition in a range of modes and media for different audiences and purposes

English Standard

Course: Preliminary Course
Course Category: A
Assessment Period: 2017

ASSESSMENT TASKS

■ Times are approximate. Exact dates will be confirmed with a minimum of two weeks' notice.

Due Date	Focus Outcomes	Task type and overview of content and skills addressed in task	Component					Weight	Your Mark	Your Rank
			A	B	C	D	E			
Wk. 10 Term 1	1, 2, 3, 4	<u>Extended response and listening task</u> Belonging.	15					15		/
Wk. 4/5 Term 2	1, 2, 3, 4, 6	<u>Half Yearly Examination</u> Belonging.			15			15		/
Wk. 8 Term 2	5, 7, 8, 9	<u>Viewing and representing task</u> The Matrix.				5	15	20		/
Wk. 6 Term 3	1, 3, 4, 12	<u>Speaking task</u> The Removalist.		15		5		20		/
Wk. 9/10 Term 3	1, 3, 4, 10, 11, 12, 13	<u>End of Preliminary Examination</u> Creative writing – Belonging. Extended response – The Matrix. Extended response – The Removalist.			10	20		30		/
TOTAL			15	15	25	30	15	100		

COMPONENTS

WEIGHTINGS

A	Listening	15
B	Speaking	15
C	Reading	25
D	Writing	30
E	Viewing and representing	15

OUTCOMES

Code	Descriptor. A student ...
1	demonstrates understanding of the relationships between composer, responder, text and context
2	identifies and describes relationships among texts
3	develops language relevant to the study of English
4	identifies and describes language forms and features and structures of particular texts that shape meaning and influence responses
5	describes the ways different technologies and media of production affect the language and structure of particular texts
6	engages with a wide range of texts to develop a considered and informed personal response
7	selects appropriate language forms and features, and structures of texts to explore and express ideas and values
8	articulates and represents own ideas in critical, interpretive and imaginative texts
9	assesses the appropriateness of a range of processes and technologies in the investigation and organisation of information and ideas
10	analyses and synthesises information and ideas from a range of texts for a variety of purposes, audiences and contexts
11	draws upon the imagination to transform experience into text
12	reflects on own processes of responding and composing
13	reflects on own processes of learning

English Studies

Course: Preliminary Course
Course Category: Content Endorsed Course (will NOT contribute to an ATAR)
Assessment Period: 2017

ASSESSMENT TASKS

■ Times are approximate. Exact dates will be confirmed with a minimum of two weeks' notice.

Due Date	Focus Outcomes	Task type and overview of content and skills addressed in task	Component				Weight	Your Mark	Your Rank
			A	B	C	D			
Wk. 11 Term 1	1.2, 1.3, 2.2	<u>Portfolio</u> Music.	5	10	5		20		/
Wk. 8 Term 2	1.4, 2.3, 4.1, 4.2	<u>Writing task</u> Resume; letter of application; mock interview. Achieving through English.	5	5	5	5	20		/
Wk. 6 Term 3	1.1, 2.1, 3.1, 3.2	<u>Group presentation</u> 'Digital Worlds'.	10	5	5	10	30		/
Wk.9/10 Term 3	1.1, 1.3, 1.4, 3.1	<u>End of Preliminary Examination</u> Creative response.	10	10	10		30		/
TOTAL			30	30	25	15	100		

COMPONENTS

WEIGHTINGS

A	Knowledge and understanding of various forms of texts, exploring the ideas and values of those texts and how language and other techniques are used in the texts to convey meaning.	30
B	Skills in reading, listening and viewing and in writing, speaking and representing.	30
C	Knowledge and skills in using language accurately, effectively and appropriately for a range of purposes, audiences and contexts.	25
D	Skills in planning and working individually and collaboratively.	15

OUTCOMES

Code	Descriptor. A student ...
P1.1	has experience of extended and short texts in a range of forms to gain knowledge, understanding and appreciation of how English is used to convey meaning
P1.2	explores the ideas and values of the texts
P1.3	identifies how language and other techniques are used to convey meaning in extended and short texts in a range of forms
P1.4	produces a range of texts in different forms
P2.1	comprehends written, spoken and multi-modal texts at an appropriate level to enrich their personal lives and to provide a sound basis for current and future education, careers and citizenship
P2.2	demonstrates skills in expression in English at an appropriate level of accuracy and fluency to enrich their personal lives and to provide a sound basis for current and future education, careers and citizenship
P2.3	demonstrates familiarity with the language conventions of a variety of textual forms, including literary texts, informative texts and texts used in vocational contexts
P3.1	recognises a range of purposes for and contexts in which language is used and the appropriate text forms, vocabulary, style and tone when writing and speaking for those purposes
P3.2	recognises a range of audiences and the appropriate text forms, vocabulary, style and tone when writing and speaking for those audiences
P4.1	plans and organises, with teacher support to complete tasks or projects, both individually and collaboratively
P4.2	works effectively, both as an individual and within a group, to locate and communicate information and ideas related to a variety of topics

Food Technology

Course: Preliminary Course
Course Category: A
Assessment Period: 2017

ASSESSMENT TASKS

■ Times are approximate. Exact dates will be confirmed with a minimum of two weeks' notice.

Due Date	Focus Outcomes	Task type and overview of content and skills addressed in task	Component				Weight	Your Mark	Your Rank
			A	B	C	D			
Wk. 9 Term 1	P2.1, P3.1, P3.2, P4.1, P4.3, P5.1	Research task Nutrition brochure based on the nutritional needs of individuals and related practical component.		10	5	5	20		/
Wk. 9 Term 2	P2.2, P4.1, P4.4, P5.1	Practical task and related questions and report Functional properties of food.			15	15	30		/
Wk. 6 Term 3	P1.1, P1.2, P3.2, P4.2	Research task, oral presentation and related practical Analysing the eating patterns of a selected group.		20	10		30		/
Wk. 9/10 Term 3	All outcomes possible	End of Preliminary Examination Covering all content studied throughout the course.	20				20		/
TOTAL			20	30	30	20	100		

COMPONENTS

WEIGHTINGS

A	Knowledge and understanding	20
B	Research, analysis and communication	30
C	Experimentation and preparation	30
D	Design, implementation and evaluation	20

OUTCOMES

Code	Descriptor. A student ...
P1.1	identifies and discusses a range of historical and contemporary factors which influence the availability of particular foods
P1.2	accounts for individual and group food selection patterns in terms of physiological, psychological, social and economic factors
P2.1	explains the role of food nutrients in human nutrition
P2.2	identifies and explains the sensory characteristics and functional properties of food
P3.1	assesses the nutrient value of meals/diets for particular individuals and groups
P3.2	presents ideas in written, graphic and oral form using computer software where appropriate
P4.1	selects appropriate equipment, applies suitable techniques, and utilises safe and hygienic practices when handling food
P4.2	plans, prepares and presents foods which reflect a range of the influences on food selection
P4.3	selects foods, plans and prepares meals/diets to achieve optimum nutrition for individuals and groups
P4.4	applies an understanding of the sensory characteristics and functional properties of food to the preparation of food products
P5.1	generates ideas and develops solutions to a range of food situations

Geography

Course: Preliminary Course
Course Category: A
Assessment Period: 2017

ASSESSMENT TASKS

■ Times are approximate. Exact dates will be confirmed with a minimum of two weeks' notice.

Due Date	Focus Outcomes	Task type and overview of content and skills addressed in task	Component				Weight	Your Mark	Your Rank
			A	B	C	D			
Wk. 10 Term 1	P1, P2, P3, P6, P8, P12	<u>Research essay</u> Biophysical interactions.	5		10	5	20		/
Wk. 4/5 Term 2	P1, P2, P3, P4, P5, P6, P10, P12	<u>Half Yearly Examination</u> Refer to the task assessment notification for specific content addressed in this examination.	15	5		5	25		/
Wk. 9 Term 2	P7, P8, P9, P10, P11, P12	<u>Senior Geography Project.</u>	5	5	10	5	25		/
Wk. 9/10 Term 3	P1, P2, P3, P4, P5, P6, P10, P12	<u>End of Preliminary Examination</u> Covering all content studied throughout the course plus geography skills.	15	10		5	30		/
TOTAL			40	20	20	20	100		

COMPONENTS

WEIGHTINGS

A	Knowledge and understanding of course content	40
B	Geographical tools and skills	20
C	Geographical inquiry and research, including fieldwork	20
D	Communication of geographical information, ideas and issues in appropriate forms	20

OUTCOMES

Code	Descriptor. A student ...
P1	differentiates between spatial and ecological dimensions in the study of geography
P2	describes the interactions between the four components which define the biophysical environment
P3	explains how a specific environment functions in terms of biophysical factors
P4	analyses changing demographic patterns and processes
P5	examines the geographical nature of global challenges confronting humanity
P6	identifies the vocational relevance of a geographical perspective
P7	formulates a plan for active geographical inquiry
P8	selects, organises and analyses relevant geographical information from a variety of sources
P9	uses maps, graphs and statistics, photographs and fieldwork to conduct geographical inquiries
P10	applies mathematical ideas and techniques to analyse geographical data
P11	applies geographical understanding and methods ethically and effectively to a research project
P12	communicates geographical information, ideas and issues using appropriate written and/or oral, cartographic and graphic forms

Hospitality (VET)

Course: Preliminary Course
Course Category: B
Assessment Period: 2017

ASSESSMENT TASKS

- Times are approximate. Exact dates will be confirmed with a minimum of two weeks' notice.

Due Date	Competencies	Task Description
Ongoing throughout the course	As applicable to tasks	Students will be provided with numerous <u>written, practical and/or oral competency</u> tasks applicable to course content. Students may have a number of opportunities to gain competency by repeating tasks throughout the year.
Wk. 9/10 Term 3	All relevant competencies	<u>End of Preliminary Examination</u> Refer to the task assessment notification for specific content addressed in this examination. Covering all units of competency marked with an asterisk (*) in unit list below.

- In addition to the major tasks listed in the table above, students will undergo regular competency assessment in numerous ongoing practical and theoretical tasks.

UNITS OF COMPETENCY

	Unit Code	Unit of Competency
1	BSBWOR203 *	work effectively with others
2	SITHIND002	source and use information on the hospitality industry
3	SITXFSA001 *	use hygienic practices for food safety
4	SITXWHS001 *	participate in safe work practices
5	SITHCCC001 *	use food preparation equipment
6	SITHCCC005 *	prepare dishes using basic methods of cookery
7	SITHKOP001 *	clean kitchen premises and equipment
8	SITXFSA002	participate in safe food handling practices
9	SITXINV002 *	maintain the quality of perishable items
10	SITHCCC011 *	use cookery skills effectively
11	SITHCCC002	prepare and present simple dishes
12	SITHCCC006	prepare appetisers and salads
13	SITHCCC007	produce stocks, sauces and soups

- All students must complete 35 hours compulsory work placement (70 hours over two years).
- On successful completion of all competencies and 70 hours of work placement, students will gain an AQF Certificate II in Kitchen Operations (SIT20416).

Industrial Technology (Multimedia / Timber)

Course: Preliminary Course
Course Category: A
Assessment Period: 2017

ASSESSMENT TASKS

■ Times are approximate. Exact dates will be confirmed with a minimum of two weeks' notice.

Due Date	Focus Outcomes	Task type and overview of content and skills addressed in task	Component		Weight	Your Mark	Your Rank
			A	B			
Wk. 10 Term 1	P3.1, P3.2, P3.3, P4.3, P5.1, P5.2	Research and design project Multimedia: Initial research on Adobe Suite. Timber: Joints, fixtures and finishing related to timber design project.		30	30		/
Wk. 4/5 Term 2	P1.1, P1.2, P7.1, P7.2	Industry study Case study on specific multimedia / timber industry.	15		15		/
Wk. 6 Term 3	P2.1, P2.2, P4.1, P4.2, P6.1, P6.2	Production of project Multimedia: Website development. Timber: Design project.	5	30	35		/
Wk. 9/10 Term 3	All outcomes possible	End of Preliminary Examination Covering all content studied throughout the course.	20		20		/
TOTAL			40	60	100		

COMPONENTS

WEIGHTINGS

A	Knowledge and understanding of the organisation and management of, and manufacturing processes and techniques used by, the focus area.	40
B	Knowledge, skills and understanding in designing, managing, problem-solving, communicating and the safe use of manufacturing processes and techniques through the design and production of a quality Major Project.	60

OUTCOMES

Code	Descriptor. A student ...
P1.1	describes the organisation and management of an individual business within the focus area industry
P1.2	identifies appropriate equipment, production and manufacturing techniques, including new and developing technologies
P2.1	describes and uses safe working practices and correct workshop equipment maintenance techniques
P2.2	works effectively in team situations
P3.1	sketches, produces and interprets drawings in the production of projects
P3.2	applies research and problem-solving skills
P3.3	demonstrates appropriate design principles in the production of projects
P4.1	demonstrates a range of practical skills in the production of projects
P4.2	demonstrates competency in using relevant equipment, machinery and processes
P4.3	identifies and explains the properties and characteristics of materials/components through the production of projects
P5.1	uses communication and information processing skills
P5.2	uses appropriate documentation techniques related to the management of projects
P6.1	identifies the characteristics of quality manufactured products
P6.2	identifies and explains the principles of quality and quality control
P7.1	identifies the impact of one related industry on the social and physical environment
P7.2	identifies the impact of existing, new and emerging technologies of one related industry on society and the environment

Information Processes and Technology

Course: Preliminary Course
Course Category: A
Assessment Period: 2017

ASSESSMENT TASKS

■ Times are approximate. Exact dates will be confirmed with a minimum of two weeks' notice.

Due Date	Focus Outcomes	Task type and overview of content and skills addressed in task	Component			Weight	Your Mark	Your Rank
			A	B	C			
Wk. 8 Term 1	P1.1, P1.2, P2.1, P2.2, P3.1	Project Business related case study (ongoing assessment throughout Term 1).	10	10		20		/
Wk. 4/5 Term 2	All outcomes possible	Half Yearly Examination Refer to the task assessment notification for specific content addressed in this examination.	5	15		20		/
Wk. 6 Term 3	P2.1, P2.2, P3.1, P4.1, P5.1, P6.1, P6.2, P7.1, P7.2	Project Develop an information system (ongoing assessment throughout Terms 2 and 3).		15	20	35		/
Wk. 9/10 Term 3	All outcomes possible	End of Preliminary Examination Covering all content studied throughout the course.	5	10	10	25		/
TOTAL			20	50	30	100		

COMPONENTS

WEIGHTINGS

A	Introduction to information skills and systems	20
B	Tools for information processes	50
C	Developing information systems	30

OUTCOMES

Code	Descriptor. A student ...
P1.1	describes the nature of information processes and information technology
P1.2	classifies the functions and operations of information processes and information technology
P2.1	identifies and describes the information processes within an information system
P2.2	recognises and explains the interdependence between each of the information processes
P3.1	identifies and describes social and ethical issues
P4.1	describes the historical development of information systems and relates these to current and emerging technologies
P5.1	selects and ethically uses computer based and non-computer based resources and tools to process information
P6.1	analyses and describes an identified need
P6.2	generates ideas, considers alternatives and develops solutions for a defined need
P7.1	recognises, applies and explains management and communication techniques used in individual and team based project work
P7.2	uses and justifies technology to support individuals and teams

Legal Studies

Course: Preliminary Course
Course Category: A
Assessment Period: 2017

ASSESSMENT TASKS

■ Times are approximate. Exact dates will be confirmed with a minimum of two weeks' notice.

Due Date	Focus Outcomes	Task type and overview of content and skills addressed in task	Component			Weight	Your Mark	Your Rank
			A	B	C			
Wk. 7 Term 1	P1, P2, P3, P4, P6, P8	<u>Media file</u> The legal system.	10	10	5	25		/
Wk. 4/5 Term 2	P1, P2, P3, P4, P5, P6, P7, P9	<u>Half Yearly Examination</u> Refer to the task assessment notification for specific content addressed in this examination.	20		5	25		/
Wk. 2 Term 3	P2, P4, P5, P6, P8, P9, P10	<u>Research based in class essay</u> Law in practice.	10	10	5	25		/
Wk. 9/10 Term 3	P1, P2, P3, P4, P5, P6, P7, P9, P10	<u>End of Preliminary Examination</u> Covering all content studied throughout the course.	20		5	25		/
TOTAL			60	20	20	100		

COMPONENTS

WEIGHTINGS

A	Knowledge and understanding of course content	60
B	Inquiry and research	20
C	Communication of legal studies information, issues and ideas in appropriate forms	20

OUTCOME

Code	Descriptor. A student ...
P1	identifies and applies legal concepts and terminology
P2	describes the key features of Australian and international law
P3	describes the operation of domestic and international legal systems
P4	discusses the effectiveness of the legal system in addressing issues
P5	describes the role of law in encouraging cooperation and resolving conflict, as well as initiating and responding to change
P6	explains the nature of the interrelationship between the legal system and society
P7	evaluates the effectiveness of the law in achieving justice
P8	locates, selects and organises legal information from a variety of sources including legislation, cases, media, international instruments and documents
P9	communicates legal information using well-structured responses
P10	accounts for differing perspectives and interpretations of legal information and issues

Mathematics

Course: Preliminary Course
Course Category: A
Assessment Period: 2017

ASSESSMENT TASKS

■ Times are approximate. Exact dates will be confirmed with a minimum of two weeks' notice.

Due Date	Focus Outcomes	Task type and overview of content and skills addressed in task	Component		Weight	Your Mark	Your Rank
			A	B			
Wk. 10 Term 1	P1, P2, P3, P4	<u>Examination</u> Basic arithmetic, algebra, surds, equations and inequations.	7.5	7.5	15		/
Wk. 5 Term 2	P1, P2, P3, P4, P5	<u>Half Yearly Examination</u> Refer to the task assessment notification for specific content addressed in this examination.	12.5	12.5	25		/
Wk. 3 Term 3	P1, P2, P3, P4	<u>Examination</u> Linear functions, geometry.	10	10	20		/
Wk. 9/10 Term 3	P1, P2, P3, P4, P5, P6, P7, P8	<u>End of Preliminary Examination</u> Covering all content studied throughout the course.	20	20	40		/
TOTAL			50	50	100		

COMPONENTS

WEIGHTINGS

A	Concepts, skills and techniques	50
B	Reasoning and communication	50

OUTCOMES

Code	Descriptor. A student ...
P1	demonstrates confidence in using mathematics to obtain realistic solutions to problems
P2	provides reasoning to support conclusions which are appropriate to the context
P3	performs routine arithmetic and algebraic manipulation involving surds, simple rational expressions and trigonometric identities
P4	chooses and applies appropriate arithmetic, algebraic, graphical, trigonometric and geometric techniques
P5	understands the concept of a function and the relationship between a function and its graph
P6	relates the derivative of a function to the slope of its graph
P7	determines the derivative of a function through routine application of the rules of differentiation
P8	understands and uses the language and notation of calculus

Mathematics Extension 1

Course: Preliminary Course
 Course Category: A
 Assessment Period: 2017

ASSESSMENT TASKS

■ Times are approximate. Exact dates will be confirmed with a minimum of two weeks' notice.

Due Date	Focus Outcomes	Task type and overview of content and skills addressed in task	Component		Weight	Your Mark	Your Rank
			A	B			
Wk. 9 Term 1	PE1, PE2, PE3, PE6	<u>Examination</u> Equations and inequalities, circle geometry.	4	4	8		/
Wk. 4/5 Term 2	PE1, PE2, PE3, PE6	<u>Half Yearly Examination</u> Refer to the task assessment notification for specific content addressed in this examination.	7.5	7.5	15		/
Wk. 5 Term 3	PE1, PE2, PE3, PE4, PE6	<u>Examination</u> Parameters.	3.5	3.5	7		/
Wk. 9/10 Term 3	PE1, PE2, PE3, PE4, PE5, PE6	<u>End of Preliminary Examination</u> Covering all content studied throughout the course.	10	10	20		/
TOTAL			25	25	50		

COMPONENTS

WEIGHTINGS

A	Concepts, skills and techniques	25
B	Reasoning and communication	25

OUTCOMES

Code	Descriptor. A student ...
PE1	appreciates the role of mathematics in the solution of practical problems
PE2	uses multi-step deductive reasoning in a variety of contexts
PE3	solves problems involving permutations and combinations, inequalities, polynomials, circle geometry and parametric representations
PE4	uses the parametric representation together with differentiation to identify geometric properties of parabolas
PE5	determines derivatives which require the application of more than one rule of differentiation
PE6	makes comprehensive use of mathematical language, diagrams and notation for communicating in a wide variety of situations

Mathematics General

Course: Preliminary Course
 Course Category: A
 Assessment Period: 2017

ASSESSMENT TASKS

■ Times are approximate. Exact dates will be confirmed with a minimum of two weeks' notice.

Due Date	Focus Outcomes	Task type and overview of content and skills addressed in task	Component		Weight	Your Mark	Your Rank
			A	B			
Wk. 9 Term 1	MGP1, MGP2, MGP3, MGP4, MGP5, MGP7, MGP9, MGP10	Examination Collecting and presenting data, algebra, equations, similar figures and trigonometry.	7.5	7.5	15		/
Wk. 4/5 Term 2	MGP1, MGP2, MGP3, MGP4, MGP5, MGP6, MGP7, MGP8, MGP9, MGP10	Half Yearly Examination Refer to the task assessment notification for specific content addressed in this examination.	12.5	12.5	25		/
Wk. 3 Term 3	MGP1, MGP2, MGP3, MGP4, MGP5, MGP9, MGP10	Examination Applications of measurement and linear functions.	10	10	20		/
Wk. 9/10 Term 3	MGP1, MGP2, MGP3, MGP4, MGP5, MGP6, MGP7, MGP8, MGP9, MGP10	End of Preliminary Examination Covering all content studied throughout the course.	20	20	40		/
TOTAL			50	50	100		

COMPONENTS

WEIGHTINGS

A	Concepts, skills and techniques	50
B	Reasoning and communication	50

OUTCOMES

Code	Descriptor. A student ...
MGP-1	uses mathematics and statistics to compare alternative solutions to contextual problems
MGP-2	represents information in symbolic, graphical and tabular form
MGP-3	represents the relationships between changing quantities in algebraic and graphical form
MGP-4	performs calculations in relation to two-dimensional and three-dimensional figures
MGP-5	demonstrates awareness of issues in practical measurement, including accuracy, and the choice of relevant units
MGP-6	models financial situations relevant to the student's current life using appropriate tools
MGP-7	determines an appropriate form of organisation and representation of collected data
MGP-8	performs simple calculations in relation to the likelihood of familiar events
MGP-9	uses appropriate technology to organise information from a limited range of practical and everyday contexts
MGP-10	justifies a response to a given problem using appropriate mathematical terminology

Modern History

Course: Preliminary Course
Course Category: A
Assessment Period: 2017

ASSESSMENT TASKS

■ Times are approximate. Exact dates will be confirmed with a minimum of two weeks' notice.

Due Date	Focus Outcomes	Task type and overview of content and skills addressed in task	Component				Weight	Your Mark	Your Rank
			A	B	C	D			
Wk. 7 Term 1	P1.1, P1.2, P2.1 P3.1, P3.2, P3.3, P3.4, P3.5, P4.1, P4.2	Prepared essay Origins of the Arab-Israeli conflict.	5		10	5	20		/
Wk. 4/5 Term 2	P1.1, P1.2, P2.1, P3.2, P3.3, P3.4, P3.5, P4.1	Half Yearly Examination Refer to the task assessment notification for specific content addressed in this examination.	5	10		5	20		/
Wk. 9 Term 2	P1.1, P1.2, P2.1, P3.1, P3.2, P3.3, P3.4, P3.5, P4.1, P4.2.	Oral presentation Historical investigation.	10	5	10	5	30		/
Wk. 9/10 Term 3	P1.1, P1.2, P2.1, P3.3, P3.4, P4.1, P4.2	End of Preliminary Examination Covering all content studied throughout the course.	20	5		5	30		/
TOTAL			40	20	20	20	100		

COMPONENTS

WEIGHTINGS

A	Knowledge and understanding of course content	40
B	Source based skills: analysis, synthesis and evaluation of historical information	20
C	Historical inquiry and research, including mandatory historical investigation	20
D	Communication of historical understanding in appropriate forms	20

OUTCOMES

Code	Descriptor. A student ...
P1.1	describe the role of key individuals, groups and events of selected studies from the eighteenth century to the present
P1.2	investigate and explain the key features and issues of selected studies from the eighteenth century to the present
P2.1	identify forces and ideas and explain their significance in contributing to change and continuity from the eighteenth century to the present
P3.1	ask relevant historical questions
P3.2	locate, select and organise relevant information from different types of sources
P3.3	comprehend and analyse sources for their usefulness and reliability
P3.4	identify and account for differing perspectives and interpretations of the past
P3.5	plan and present the findings of historical investigations, analysing and synthesising information from different types of sources
P4.1	use historical terms and concepts appropriately
P4.2	communicate a knowledge and understanding of historical features and issues, using appropriate and well-structured oral and written forms

Music 1

Course: Preliminary Course
Course Category: A
Assessment Period: 2017

ASSESSMENT TASKS

■ Times are approximate. Exact dates will be confirmed with a minimum of two weeks' notice.

Due Date	Focus Outcomes	Task type and overview of content and skills addressed in task	Component				Weight	Your Mark	Your Rank
			A	B	C	D			
Wk. 10 Term 1	P2, P4, P5, P6, P7, P8, P10, P11	<u>Musicology essay</u> Chosen unit.		10			10		/
Wk. 4/5 Term 2	P1, P3, P4, P5, P6, P7, P8, P9, P10, P11	<u>Half Yearly Examination</u> Refer to the task assessment notification for specific content addressed in this examination.	10			10	20		/
Wk. 5 Term 3	P2, P3, P4, P5, P7, P8, P10, P11	<u>Original composition or arrangement</u> Using Sibelius or Guitar Pro.			25		25		/
Wk. 9/10 Term 3	P1, P2, P3, P4, P5, P6, P7, P8, P9, P10, P11	<u>End of Preliminary Examination</u> Two performance pieces; aural examination; viva voce.	15	15		15	45		/
TOTAL			25	25	25	25	100		

COMPONENTS

WEIGHTINGS

A	Performance	25
B	Musicology	25
C	Composition	25
D	Aural	25

OUTCOMES

Code	Descriptor. A student ...
P1	performs music that is characteristic of the topics studied
P2	observes, reads, interprets and discusses simple musical scores characteristic of topics studied
P3	improvises and creates melodies, harmonies and rhythmic accompaniments for familiar sound sources reflecting the cultural and historical contexts studied
P4	recognises and identifies the concepts of music and discusses their use in a variety of musical styles
P5	comments on and constructively discusses performances and compositions
P6	observes and discusses concepts of music in works representative of the topics studied
P7	understands the capabilities of performing media, explores and uses current technologies as appropriate to the topics studied
P8	identifies, recognises, experiments with and discusses the use of technology in music
P9	performs as a means of self-expression and communication
P10	demonstrates a willingness to participate in performance, composition, musicology and aural activities
P11	demonstrates a willingness to accept and use constructive criticism

Music 2

Course: Preliminary Course
Course Category: A
Assessment Period: 2017

ASSESSMENT TASKS

■ Times are approximate. Exact dates will be confirmed with a minimum of two weeks' notice.

Due Date	Focus Outcomes	Task type and overview of content and skills addressed in task	Component				Weight	Your Mark	Your Rank
			A	B	C	D			
Wk. 10 Term 1	P2, P5, P6, P7, P8, P9, P11, P12	Musicology Essay Mandatory topic.		10			10		/
Wk. 4/5 Term 2	P1, P2, P3, P4, P5, P6, P7, P10, P11, P12	Half Yearly Examination Refer to the task assessment notification for specific content addressed in this examination.	10			10	20		/
Wk. 5 Term 3	P3, P4, P5, P6, P7, P11, P12	Original composition or arrangement Using Sibelius or Guitar Pro.			25		25		/
Wk. 9/10 Term 3	P1, P2, P3, P4, P5, P6, P7, P10, P11, P12	End of Preliminary Examination Two performance pieces, sight singing; aural examination; viva voce.	15	15		15	45		/
TOTAL			25	25	25	25	100		

COMPONENTS

WEIGHTINGS

A	Performance	25
B	Musicology	25
C	Composition	25
D	Aural	25

OUTCOMES

Code	Descriptor. A student ...
P1	confidently performs repertoire, that reflects the mandatory and additional topics, both as a soloist and as a member of an ensemble
P2	demonstrates an understanding of the concepts of music, by interpreting, analysing, discussing, creating and notating a variety of musical symbols characteristically used in the mandatory and additional topics
P3	composes, improvises and analyses melodies and accompaniments for familiar sound sources in solo and/or small ensembles
P4	creates, improvises and notates music which is representative of the mandatory and additional topics and demonstrates different social, cultural and historical contexts
P5	analyses and discusses compositional processes with stylistic, historical, cultural and musical considerations
P6	discusses and evaluates music making constructive suggestions about performances and compositions
P7	observes and discusses in detail the concepts of music in works representative of the mandatory and additional topics
P8	understands the capabilities of performing media, explores and uses current technologies as used in current technologies as studied
P9	identifies, recognises, experiments with, and discusses the use of technology in music
P10	performs as a means of self-expression and communication
P11	demonstrates a willingness to participate in performance, composition, musicology and aural activities
P12	demonstrates a willingness to accept and use constructive criticism

Personal Development, Health and Physical Education

Course: Preliminary Course
 Course Category: A
 Assessment Period: 2017

ASSESSMENT TASKS

■ Times are approximate. Exact dates will be confirmed with a minimum of two weeks' notice.

Due Date	Focus Outcomes	Task type and overview of content and skills addressed in task	Component			Weight	Your Mark	Your Rank
			A	B	C			
Wk. 2 Term 2	P7, P8, P9, P11, P13, P16, P17	Written report Sport analysis: body in motion and composition and performance.	10	5	10	25		/
Wk. 4/5 Term 2	P7, P8, P9, P11, P15, P16, P17	Half Yearly Examination Refer to the task assessment notification for specific content addressed in this examination.	10	5	5	20		/
Wk. 5 Term 3	P1, P2, P3, P4, P5, P6, P10, P15	Case study Health promotion analysis.	5	10	10	25		/
Wk. 9/10 Term 3	All outcomes possible	End of Preliminary Examination Covering all content studied throughout the course.	15	10	5	30		/
TOTAL			40	30	30	100		

COMPONENTS

WEIGHTINGS

A	Knowledge and understanding of the factors affecting health and the way the body moves	40
B	Skills in influencing personal and community health and taking action to improve participation and performance in physical activity	30
C	Skills in critical thinking in research and analysis	30

OUTCOMES

Code	Descriptor. A student ...
P1	identifies and examines why people give different meanings to health and to physical activity
P2	explains how nutrition, physical activity, drug use and relationships affect personal health
P3	recognises that health is determined by socio-cultural, economic and environmental factors
P4	identifies aspects of health over which individuals can exert some control
P5	plans for and can implement actions that can support the health of others
P6	proposes actions that can improve and maintain personal health
P7	explains how body structures influence the way the body moves
P8	describes the components of physical fitness and explains how they are monitored
P9	describes biomechanical factors that influence the efficiency of the body in motion
P10	plans for participation in physical activity to satisfy a range of individual needs
P11	assesses and monitors physical fitness levels and physical activity patterns
P13	develops, refines and performs movement compositions in order to achieve a specific purpose (Option 2)
P15	forms opinions about health-promoting actions based on a critical examination of relevant information
P16	utilises a range of sources to draw conclusions about health and physical activity concepts
P17	analyses factors influencing movement and patterns of participation

Physics

Course: Preliminary Course
Course Category: A
Assessment Period: 2017

ASSESSMENT TASKS

■ Times are approximate. Exact dates will be confirmed with a minimum of two weeks' notice.

Due Date	Focus Outcomes	Task type and overview of content and skills addressed in task	Component			Weight	Your Mark	Your Rank
			A	B	C			
Wk. 10 Term 1	P1, P2, P3, P4, P5, P8, P9, P13, P14, P15	Research task The World Communicates.	5	15	5	25		/
Wk. 4/5 Term 2	P3, P6, P7, P8, P12	Half Yearly Examination Refer to the task assessment notification for specific content addressed in this examination.	10		5	15		/
Wk. 5 Term 3	P1, P2, P3, P8, P10, P11, P12, P13, P14	Scientific skills The Cosmic Engine.	5	15	5	25		/
Wk. 9/10 Term 3	All outcomes possible	End of Preliminary Examination Covering all content studied throughout the course.	20		15	35		/
TOTAL			40	30	30	100		

COMPONENTS

WEIGHTINGS

A	Knowledge and understanding of the history, nature, and practice of physics, applications and uses of physics and their implications for society and the environment, and current issues, research and developments in physics; kinematics and dynamics, energy, waves, fields and matter.	40
B	Skills in planning and conducting first-hand investigations; gathering and processing first-hand data; gathering and processing relevant information from secondary sources.	30
C	Skills in communicating information and understanding; developing scientific thinking and problem-solving techniques; working individually and in teams.	30

OUTCOMES

Code	Descriptor. A student ...
P1	outlines the historical development of major principles, concepts and ideas in physics
P2	applies the processes that are used to test and validate models, theories and laws of science with particular emphasis on first-hand investigations in physics
P3	assesses the impact of particular technological advances on understanding in physics
P4	describes applications of physics which affect society or the environment
P5	describes the scientific principles employed in particular areas of research in physics
P6	describes the forces acting on an object which causes changes in its motion
P7	describes the effects of energy transfers and energy transformations
P8	explains wave motions in terms of energy sources and the oscillations produced
P9	describes the relationship between force and potential energy in fields
P10	describes theories and models in relation to the origins of matter and relates these to the forces involved
P11	identifies and implements improvements to investigation plans
P12	discusses the validity and reliability of data gathered from first-hand investigations and secondary sources
P13	identifies appropriate terminology and reporting styles to communicate information and understanding in physics
P14	draws valid conclusions from gathered data and information
P15	implements strategies to work effectively as an individual or as a member of a team

Retail Services (VET)

Course: Preliminary Course
Course Category: B
Assessment Period: 2017

ASSESSMENT TASKS

- Times are approximate. Exact dates will be confirmed with a minimum of two weeks' notice.

Due Date	Competencies	Task Description
Ongoing throughout the course	As applicable to tasks	Students will be provided with numerous <u>written, practical and/or oral competency tasks</u> applicable to course content. Students may have a number of opportunities to gain competency by repeating tasks throughout the year.
Wk. 9/10 Term 3	All relevant competencies	<u>End of Preliminary Examination</u> Refer to the task assessment notification for specific content addressed in this examination. Covering all units of competency marked with an asterisk (*) in unit list below.

- In addition to the major tasks listed in the table above, students will undergo regular competency assessment in numerous ongoing practical and theoretical tasks.

UNITS OF COMPETENCY

	Unit Code	Unit of Competency
1	SIRXCOM002 *	work effectively in a team
2	SIRXIND001 *	work effectively in a service environment
3	SIRXWHS002 *	contribute to workplace health and safety
4	SIRXIND002	organise and maintain the store environment
5	SIRXCEG001 *	engage the customer
6	SIRXCEG002 *	assist with customer difficulties
7	SIRXCEG003 *	build customer relationships and loyalty
8	SIRXPDK001	advise on products and services
9	SIRXSL001 *	sell to the retail customer
10	SIRXSL002	follow point-of-sale procedures
11	SIRRTF001	balance and secure point-of-sale terminal
12	SIRXRSK001 *	identify and respond to security risks
13	SIRRINV001	receive and handle retail stock
14	SIRRMER001	produce visual merchandise displays

- All students must complete 35 hours compulsory work placement (70 hours over two years).
- On successful completion of all competencies and 70 hours of work placement, students will gain an AQF Certificate III in Retail Services (SIR30216).

Senior Science

Course: Preliminary Course
Course Category: A
Assessment Period: 2017

ASSESSMENT TASKS

■ Times are approximate. Exact dates will be confirmed with a minimum of two weeks' notice.

Due Date	Focus Outcomes	Task type and overview of content and skills addressed in task	Component			Weight	Your Mark	Your Rank
			A	B	C			
Wk. 8 Term 1	P2, P7, P11, P12, P13, P14, P15	First hand investigation / field study Long Reef field study, life on a coastal platform.	5	5	5	15		/
Wk. 4/5 Term 2	P1, P2, P4, P6, P7, P10, P12, P13, P14	Half Yearly Examination Refer to the task assessment notification for specific content addressed in this examination.	10	5	5	20		/
Wk. 6 Term 3	P1, P2, P3, P4 P5, P6, P7, P8, P9, P10, P11, P12, P13, P14, P15	Resource portfolio Plants, Water for Living and Humans at Work.	10	15	10	35		/
Wk. 9/10 Term 3	All outcomes possible	End of Preliminary Examination Covering all content studied throughout the course.	15	5	10	30		/
TOTAL			40	30	30	100		

COMPONENTS

WEIGHTINGS

A	Knowledge and understanding of the history, nature, and practice of science, applications and uses of science and their implications for society and the environment, and current issues, research and developments in science; the resources of the Earth, internal and external environments, chemical changes, organs and systems of the body and energy.	40
B	Skills in planning and conducting first-hand investigations; gathering and processing first-hand data; gathering and processing relevant information from secondary sources.	30
C	Skills in communicating information and understanding; developing scientific thinking and problem-solving techniques; working individually and in teams.	30

OUTCOMES

Code	Descriptor. A student ...
P1	outlines the historical development of scientific principles, concepts and ideas
P2	applies the processes that are used to test and validate models, theories and laws of science, with particular emphasis on first-hand investigations
P3	assesses the impact of particular technological advances on science
P4	identifies applications of science that affect society and the environment
P5	identifies areas of current scientific research
P6	identifies the origins of Earth's resources
P7	explains relationships between organisms in the environment
P8	describes reactions between compounds
P9	describes the structure of body organs and systems
P10	describes the effect of energy transfers and transformations
P11	identifies and implements improvements to investigation plans
P12	discusses the validity and reliability of data gathered from first-hand investigations and secondary sources
P13	identifies appropriate terminology and reporting styles to communicate information and understanding in science
P14	draws valid conclusions from gathered data and information
P15	implements strategies to work effectively as an individual or as a member of a team

Sport, Lifestyle and Recreation 1 unit

Course: Preliminary Course
Course Category: Content Endorsed Course (will NOT contribute to an ATAR)
Assessment Period: 2017

ASSESSMENT TASKS

■ Times are approximate. Exact dates will be confirmed with a minimum of two weeks' notice.

Due Date	Focus Outcomes	Task type and overview of content and skills addressed in task	Component		Weight	Your Mark	Your Rank
			A	B			
Wk. 11 Term 1	1.1, 1.3, 3.3, 4.4	<u>Practical task</u> Games and Sport Application II.		12.5	12.5		/
Wk. 10 Term 2	1.1, 1.3, 2.1, 2.2, 3.1, 3.2, 4.2, 4.5	<u>Practical task and written plan</u> Sport coaching and training.	12.5	12.5	25		/
Wk. 9/10 Term 3	1.1, 1.3, 2.1, 3.2	<u>End of Preliminary Examination</u> Games and Sport Application I & II.	12.5		12.5		/
TOTAL			25	25	50		

COMPONENTS

WEIGHTINGS

A	Knowledge and understanding	25
B	Skills	25

OUTCOMES

Code	Descriptor. A student ...
1.1	applies the rules and conventions that relate to participation in a range of physical activities
1.3	demonstrates ways to enhance safety in physical activity
2.1	explains the principles of skill development and training
2.2	analyses the fitness requirements of specific activities
3.1	selects appropriate strategies and tactics for success in a range of movement contexts
3.2	designs programs that respond to performance needs
3.3	measures and evaluates physical performance capacity
4.2	demonstrates leadership skills and a capacity to work cooperatively in movement context
4.4	demonstrates competence and confidence in movement contexts
4.5	recognises the skills and abilities required to adopt roles that support health, safety and physical activity

Studies of Religion 1 unit

Course: Preliminary Course
 Course Category: A
 Assessment Period: 2017

ASSESSMENT TASKS

■ Times are approximate. Exact dates will be confirmed with a minimum of two weeks' notice.

Due Date	Focus Outcomes	Task type and overview of content and skills addressed in task	Component				Weight	Your Mark	Your Rank
			A	B	C	D			
Wk. 9 Term 1	P1, P2, P6, P7, P8, P9	Research and in class writing task Nature of Religion and Beliefs.	5	5		5	15	/	
Wk. 4 Term 3	P2, P3, P4, P5, P6, P7, P8, P9	Research and written report One religious tradition: Judaism, Christianity.	5		10		15	/	
Wk. 9/10 Term 3	All outcomes possible	End of Preliminary Examination Covering all content studied throughout the course.	10	5		5	20	/	
TOTAL			20	10	10	10	50		

COMPONENTS

WEIGHTINGS

A	Knowledge and understanding of course content	20
B	Source-based skills	10
C	Investigation and research	10
D	Communication of information, ideas and issues in appropriate forms	10

OUTCOMES

Code	Descriptor. A student ...
P1	describes the characteristics of religion and belief systems
P2	identifies the influence of religion and belief systems on individuals and society
P3	investigates religious traditions and belief systems
P4	examines significant aspects of religious traditions
P5	describes the influence of religious traditions in the life of adherents
P6	selects and uses relevant information about religion from a variety of sources
P7	undertakes effective research about religion, making appropriate use of time and resources
P8	uses appropriate terminology related to religion and belief systems
P9	effectively communicates information, ideas and issues using appropriate written, oral and graphic forms

Studies of Religion 2 unit

Course: Preliminary Course
 Course Category: A
 Assessment Period: 2017

ASSESSMENT TASKS

■ Times are approximate. Exact dates will be confirmed with a minimum of two weeks' notice.

Due Date	Focus Outcomes	Task type and overview of content and skills addressed in task	Component				Weight	Your Mark	Your Rank
			A	B	C	D			
Wk. 9 Term 1	P3, P4, P5, P6, P7, P8, P9	Research and in class writing task Nature of Religion and Beliefs and Religions of Ancient Origin.	5	5	10	5	25	/	
Wk. 4/5 Term 2	P1, P2, P5, P8, P9	Half Yearly Examination Refer to the task assessment notification for specific content addressed in this examination.	10			5	15	/	
Wk. 4 Term 3	P1, P2, P3, P5, P6, P7, P8, P9	Research and written report Two Religious Tradition Studies.		15	5		20	/	
Wk. 9/10 Term 3	All outcomes possible	End of Preliminary Examination Covering all content studied throughout the course.	25		5	10	40	/	
TOTAL			40	20	20	20	100		

COMPONENTS

WEIGHTINGS

A	Knowledge and understanding of course content	40
B	Source-based skills	20
C	Investigation and research	20
D	Communication of information, ideas and issues in appropriate forms	20

OUTCOMES

Code	Descriptor. A student ...
P1	describes the characteristics of religion and belief systems
P2	identifies the influence of religion and belief systems on individuals and society
P3	investigates religious traditions and belief systems
P4	examines significant aspects of religious traditions
P5	describes the influence of religious traditions in the life of adherents
P6	selects and uses relevant information about religion from a variety of sources
P7	undertakes effective research about religion, making appropriate use of time and resources
P8	uses appropriate terminology related to religion and belief systems
P9	effectively communicates information, ideas and issues using appropriate written, oral and graphic forms

Visual Arts

Course: Preliminary Course
Course Category: A
Assessment Period: 2017

ASSESSMENT TASKS

■ Times are approximate. Exact dates will be confirmed with a minimum of two weeks' notice.

Due Date	Focus Outcomes	Task type and overview of content and skills addressed in task	Component		Weight	Your Mark	Your Rank
			A	B			
Wk. 8 Term 1	P1, P2, P3, P4, P5, P6	Artmaking Neo-Chair: Submission of artworks and Visual Arts Diary.	15		15		/
Wk. 4/5 Term 2	P1, P2, P3, P4, P5, P6, P7, P8, P9, P10	Half Yearly Examination Refer to the task assessment notification for specific content addressed in this examination.		20	20		/
Wk. 6 Term 3	P1, P2, P3, P4, P5, P6	Artmaking Mini body of work. Submission of artworks and Visual Arts Diary.	35		35		/
Wk. 9/10 Term 3	P1, P2, P3, P4, P5, P6, P7, P8, P9, P10	End of Preliminary Examination Using the frames and conceptual framework to interpret and respond to artworks.		30	30		/
TOTAL			50	50	100		

COMPONENTS

WEIGHTINGS

A	Artmaking	50
B	Art criticism and art history	50

OUTCOMES

Code	Descriptor. A student ...
P1	explores the conventions of practice in artmaking
P2	explores the roles and relationships between the concepts of artist, artwork, world and audience
P3	identifies the frames as the basis of understanding expressive representation through the making of art
P4	investigates subject matter and forms as representations in artmaking
P5	investigates ways of developing coherence and layers of meaning in the making of art
P6	explores a range of material techniques in ways that support artistic intentions
P7	explores the conventions of practice in art criticism and art history
P8	explores the roles and relationships between concepts of artist, artwork, world and audience through critical and historical investigations of art
P9	identifies the frames as the basis of exploring different orientations to critical and historical investigations of art
P10	explores ways in which significant art histories, critical narratives and other documentary accounts of the visual arts can be constructed

Work Studies 1 unit

Course: Preliminary Course
Course Category: Content Endorsed Course (will NOT contribute to an ATAR)
Assessment Period: 2017

ASSESSMENT TASKS

■ Times are approximate. Exact dates will be confirmed with a minimum of two weeks' notice.

Due Date	Focus Outcomes	Task type and overview of content and skills addressed in task	Component		Weight	Your Mark	Your Rank
			A	B			
A) Wk. 8 Term 1	3, 4, 7, 9	Writing task Part A: Core Study My Working Life – reflection on the transition from school to work (10%). Part B: Core Study My Working Life – development of a career plan (15%).	5	20	25		/
B) Wk. 6 Term 2							
Wk. 10 Term 2	1, 2, 6, 8	Research portfolio In the Workplace.	10		10		/
Wk. 6 Term 3	5, 6, 7	Writing task and interview Part A: Preparing job applications – resume (5%). Part B: Mock interview (10%).		15	15		/
TOTAL			15	35	50		

COMPONENTS

WEIGHTINGS

A	Knowledge and understanding	15
B	Skills	35

OUTCOMES

Code	Descriptor. A student ...
1	investigates a range of work environments
2	examines different types of work and skills for employment
3	analyses employment options and strategies for career management
4	assesses pathways for further education, training and life planning
5	communicates and uses technology effectively
6	applies self-management and teamwork skills
7	utilises strategies to plan, organise and solve problems
8	assesses influences on people's working lives
9	evaluates personal and social influences on individuals and groups

Year 11 2017: Personal Assessment Calendar

Term 1 2017	Term 2 2017	Term 3 2017	Term 4 2017
Week 1	Week 1	Week 1	Week 1
Week 2	Week 2	Week 2	Week 2
Week 3	Week 3	Week 3	Week 3
Week 4	Week 4 Year 11 Half Yearly Assessment Week	Week 4	Week 4 HSC Courses Commence
Week 5	Week 5 Year 11 Half Yearly Assessment Week	Week 5	Week 5
Week 6	Week 6	Week 6	Week 6
Week 7	Week 7	Week 7	Week 7
Week 8	Week 8	Week 8	Week 8
Week 9	Week 9	Week 9 Year 11 End of Preliminary Course Examinations (Thurs / Fri)	Week 9
Week 10	Week 10	Week 10 Year 11 End of Preliminary Course Examinations	Week 10
Week 11			Week 11